

# ROBUSCH®

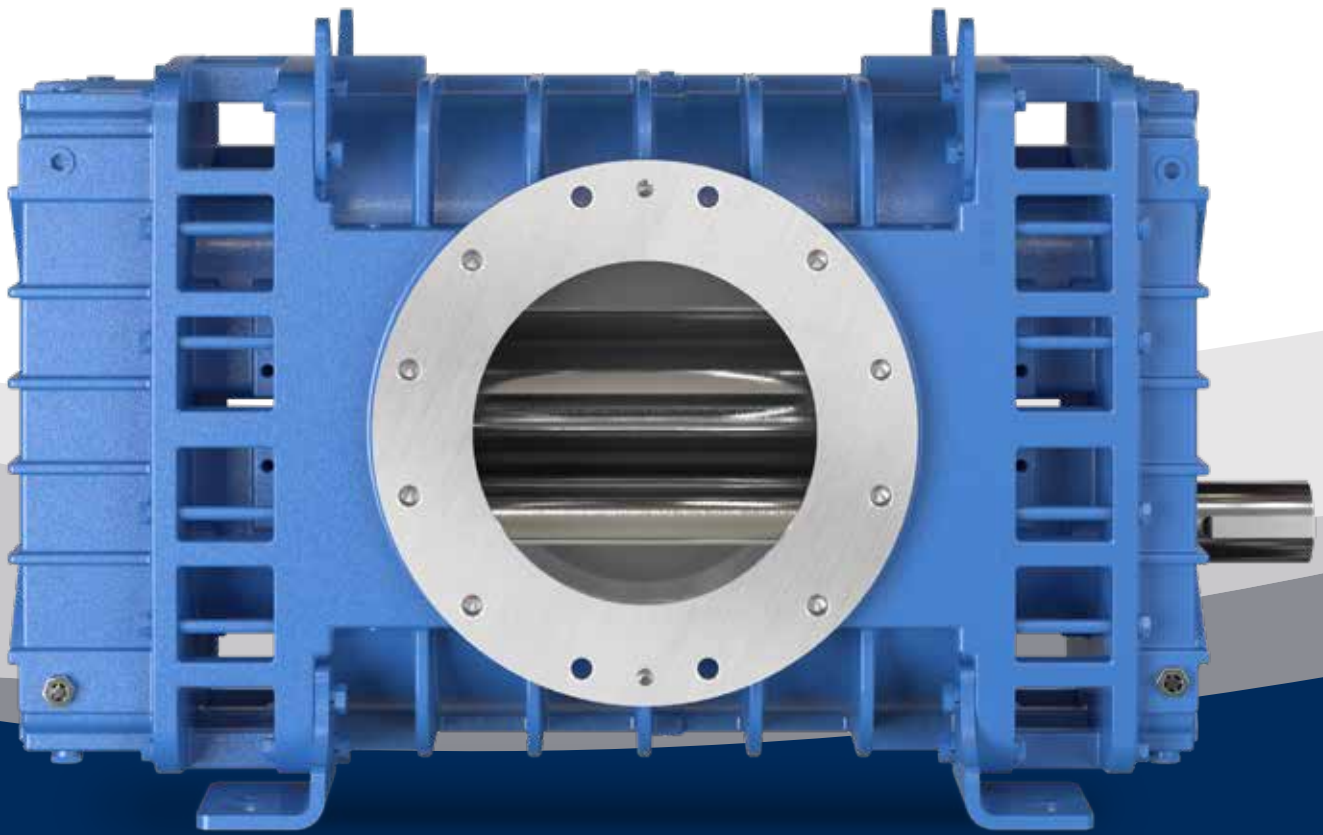
by Gardner Denver

## TriFlow 825

TRI-LOBE BLOWER/VACUUM PUMP | TRANSPORT SERIES



# TF 825 VACUUM BLOWER

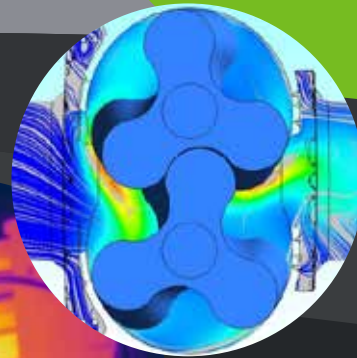


## Introducing the TF 825

- Straight Tri-Lobe
- Performance: Vacuum up to 19 inHg continuous;  
Flow up to 4805 cfm
- Flexible Options & Installation
- Coolest Blower Temperatures in Its Class
- Energy Efficient vs. Other Straight Lobe Blowers

### Ideal Applications

- Sewer Cleaning
- Storm Sewers
- Water Treatment Plants
- Municipal Water Departments
- Cleaning & Washing



# BETTER PERFORMANCE

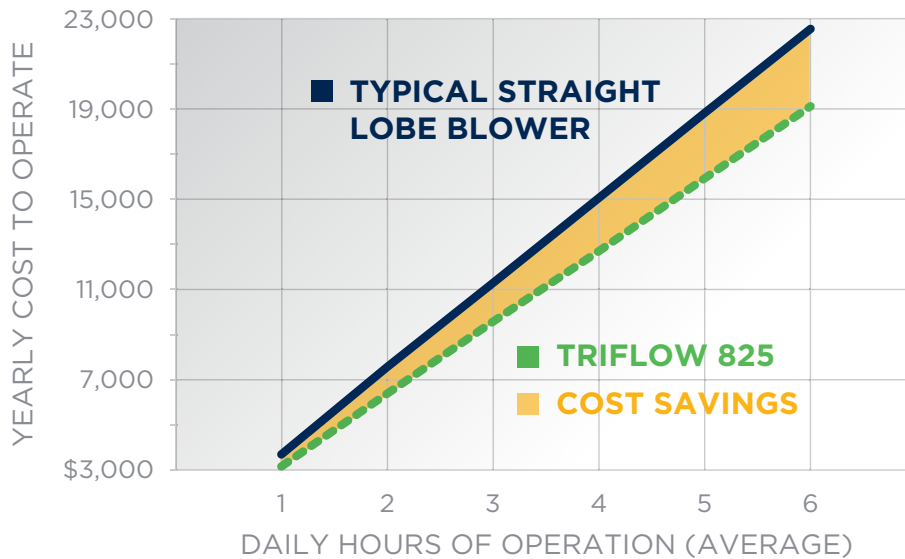
$$7 + 9 = \$\$$$

**% Power Savings**

**% Higher Flow**

**SAVINGS**  
Up to **\$2,000**  
PER YEAR IN FUEL

OPERATION COST SAVINGS\*

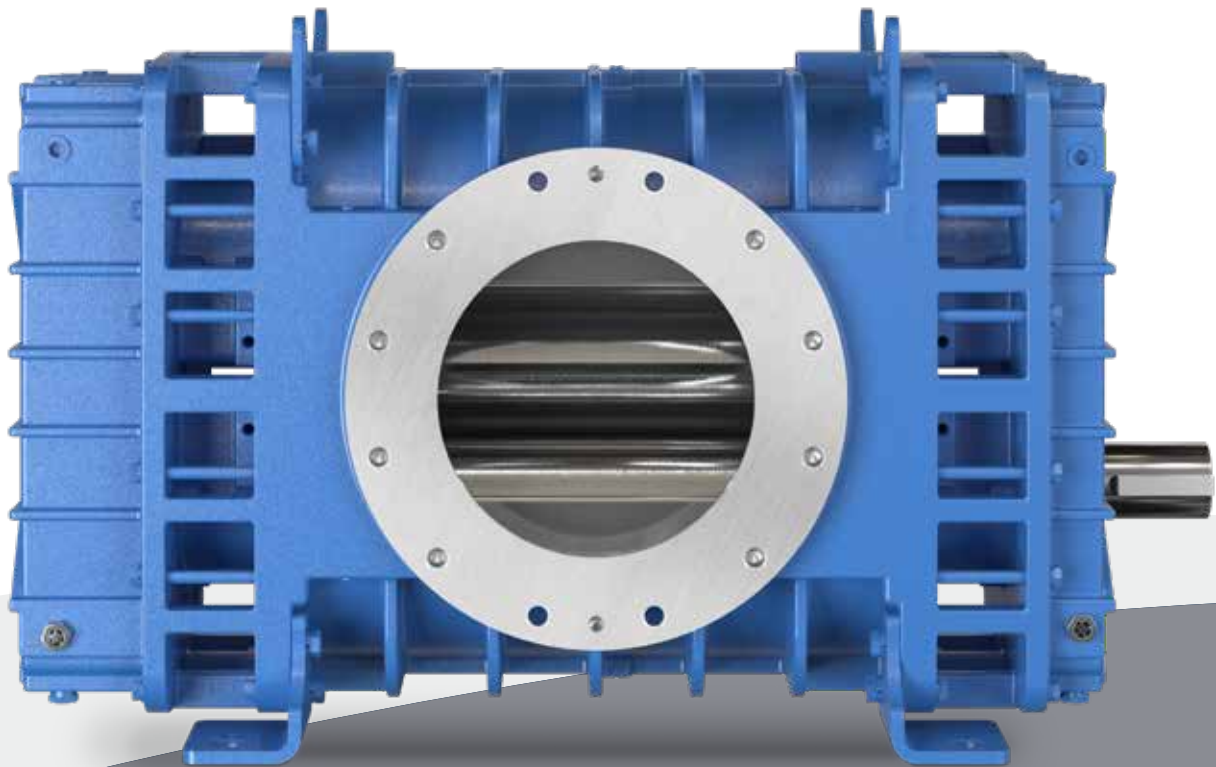


\*Assumes 1300 engine RPM, and \$2.50/gallon fuel cost

# INNOVATION

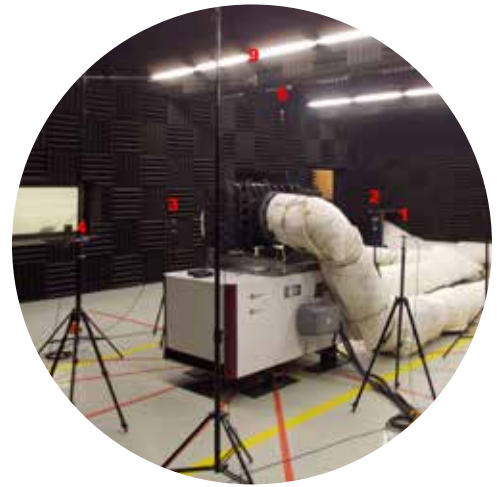
**TriFlow 825 is tuned to operate specifically in the Sewer Truck operating pressure range.**

- Tri-Lobe Design is Fuel Efficient and Offers Increased Performance
- Offers Cooler Operating Temperatures

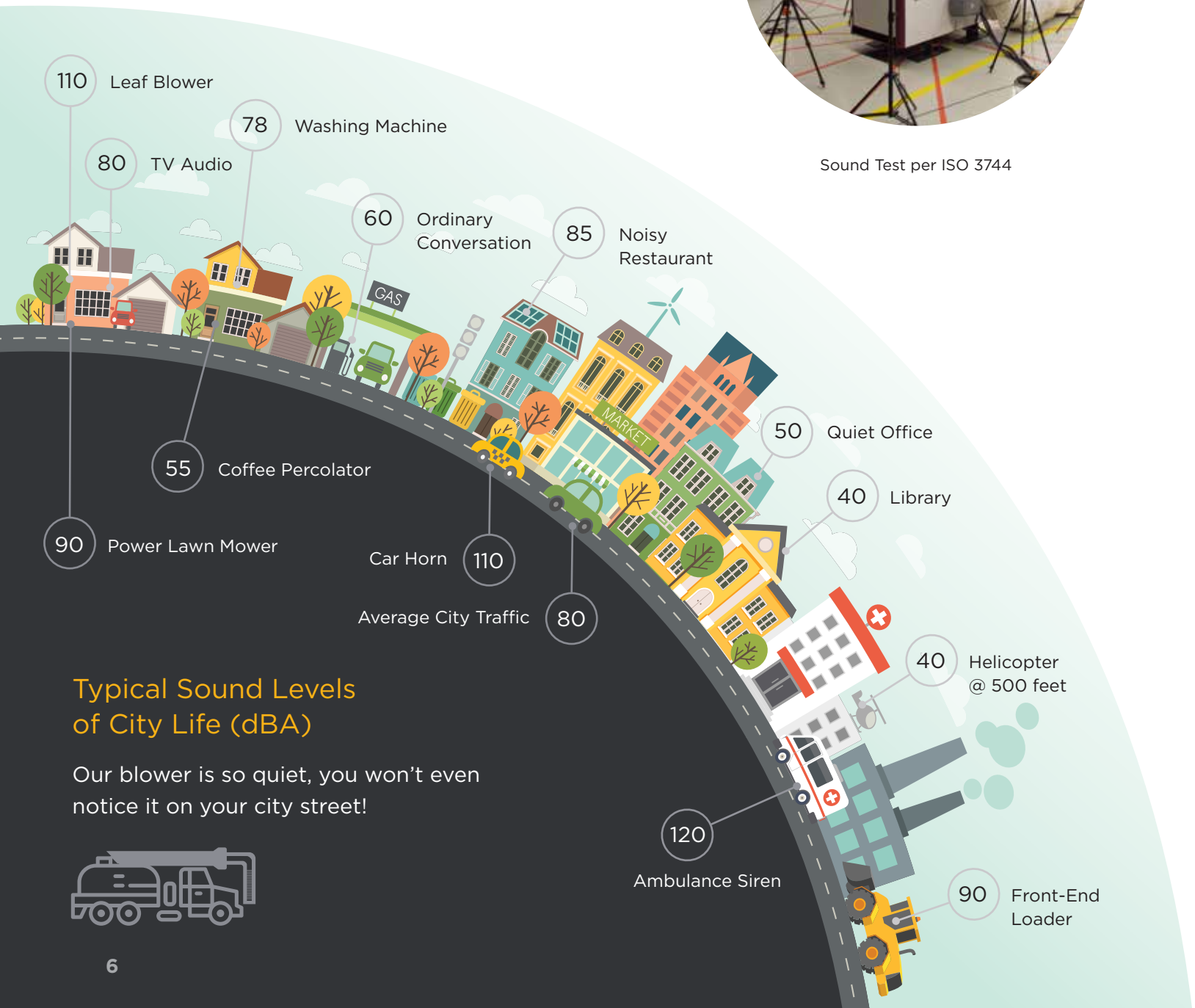


# LOW NOISE

Tri-Lobe Design Offers Lower Sound Levels



Sound Test per ISO 3744



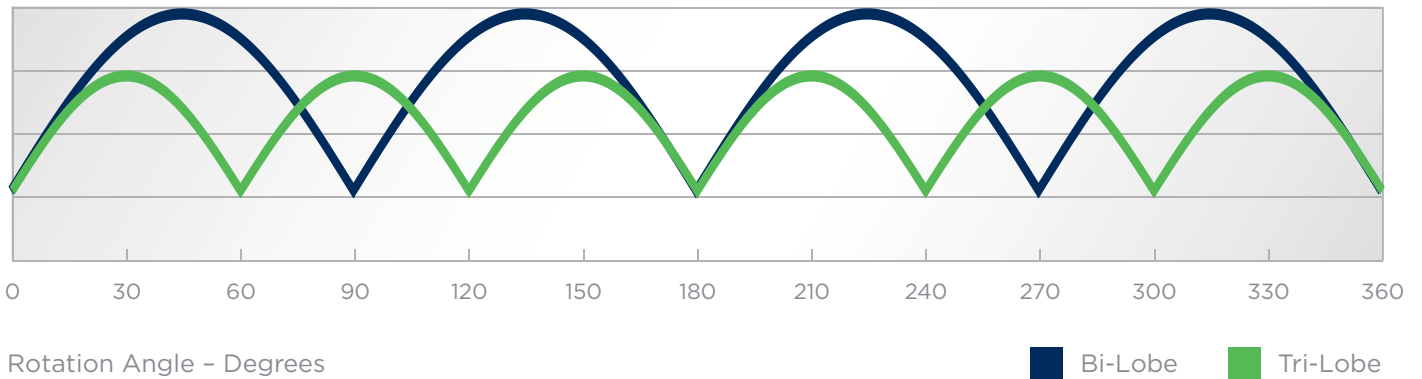
## Typical Sound Levels of City Life (dBA)

Our blower is so quiet, you won't even notice it on your city street!

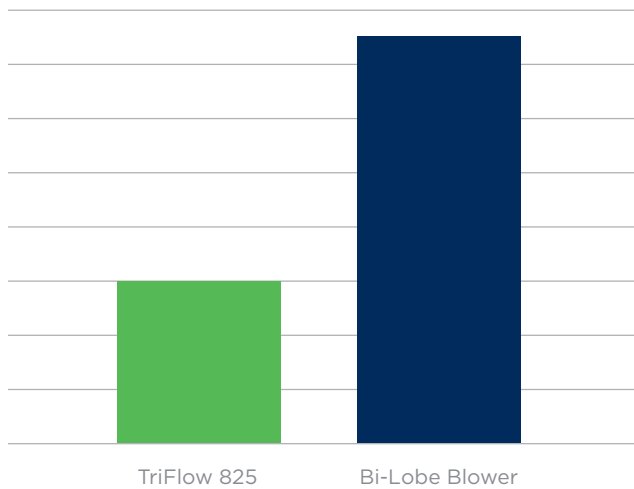


# Reduced Pulse = Lower Noise = Quieter Operation

CHANGE IN PRESSURE PULSE



NOISE LEVEL @ 19 inHg, 2250 RPM (in dBA)



LESS NOISE

= SMALLER SILENCERS

= LESS WEIGHT  
& MORE  
AVAILABLE SPACE







# TF 825 COMPONENTS

- 1** Helical Gears
  - Provide Smooth, Nearly Noiseless, Synchronized Operation
- 2** Low Pulse, Straight Tri-Lobe Rotors
  - Ductile Iron
  - Assembly Allows Operation at Higher RPMs Providing Outstanding Performance
  - Decreased Noise
- 3** Labyrinth Piston Ring
- 4** Heavy Duty Bearings
  - Spherical Roller Bearings at All Four Locations
  - Increased Blower Life and Less Maintenance
- 5** Dual Splash Lubrication
- 6** Bearing Housing Gap for Cooler Air Temperatures

TriFlow 825

# PERFORMANCE DATA

## VACUUM

MODEL	SPEED RPM	8 inHg		12 inHg		16 inHg		18 inHg	
		CFM	BHP	CFM	BHP	CFM	BHP	CFM	BHP
TF 825	900	1400	31.4	1270	51.5	1120	64.8	-	-
	1200	2003	41.35	1882	65.3	1742	84.6	-	-
	1600	2795	56.5	2683	85.6	2558	112.9	-	-
	2000	3573	73.9	3470	108.1	3360	143.4	3320	155.2
	2250	4052	85.9	3954	123.2	3852	163.6	3818	179.1
	2500	4527	98.8	4435	139.3	4339	184.6	4311	203.9

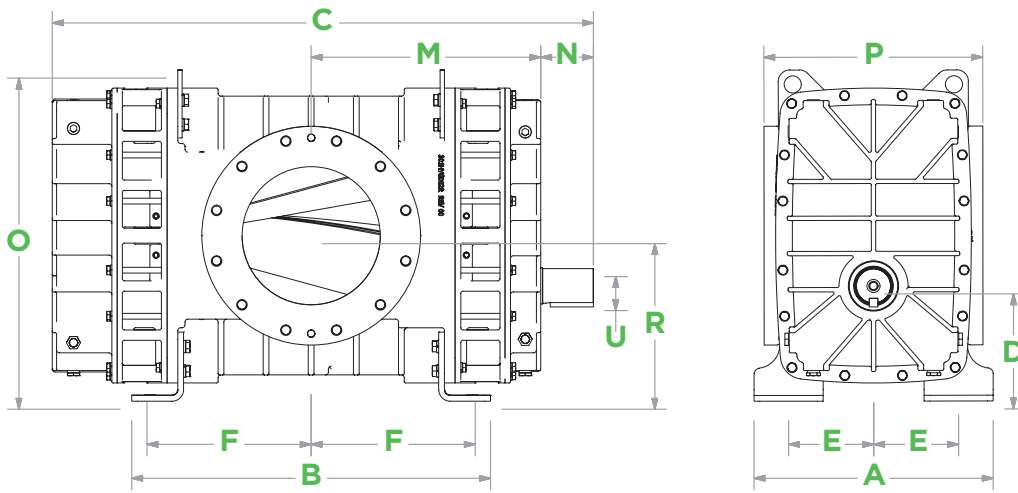
## PRESSURE

MODEL	SPEED RPM	2 PSI		4 PSI		6 PSI	
		CFM	BHP	CFM	BHP	CFM	BHP
TF 825	1500	2585	31.2	2537	57.2	2492	82.9
	1600	2782	33.0	2736	61.3	2690	89.1
	2000	3576	42.8	3530	79.6	3485	116.1
	2250	4072	50.6	4026	92.8	3980	134.6
	2500	4570	59.8	4523	107.3	4476	154.5

**DIMENSIONS** IN INCHES UNLESS OTHERWISE NOTED

MODEL	A	B	C	D	E	F
TF 825	20.7	31.15	47	10	7.5	14
	M	N	O	P	R	U
	19.96	4.53	28	19	13.63	3

Weight is 1,460 lbs.



# ROBUSCHI®

by Gardner Denver

## Gardner Denver®

**Gardner Denver, Inc.**

1800 Gardner Expressway  
Quincy, IL 62305  
866-428-4890

[www.gardnerdenver.com/gdproducts](http://www.gardnerdenver.com/gdproducts)

©2019 Gardner Denver, Inc. Printed in U.S.A.  
RB-TF-825 2nd Ed. 2/19

Please recycle after use.



**NTTC**  
NATIONAL TANK TRUCK CARRIERS

ROBUSCHI reserves the right to make any modification aimed at the continual improvement of their products.