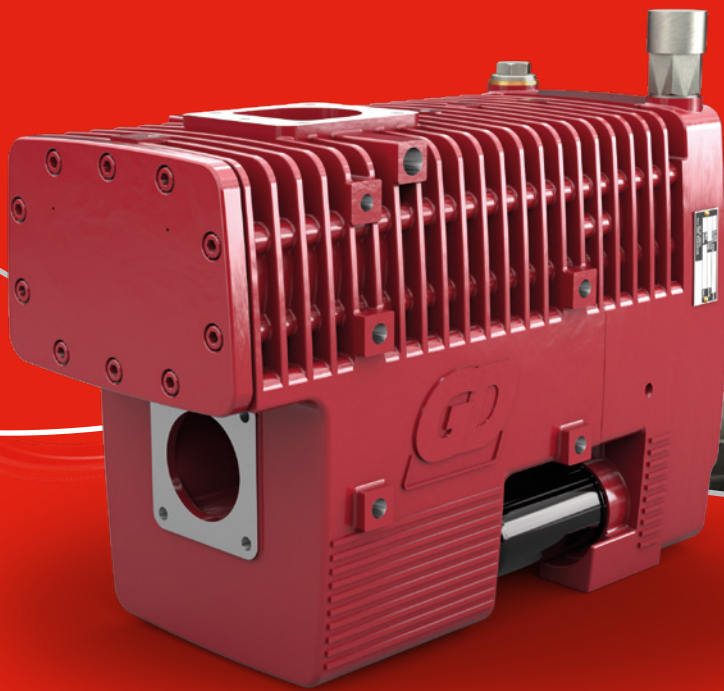




# Bulkline

## Oil Free Screw Compressor



The Bulkline screw compressors are specifically designed for the contaminant free discharge of dense bulk powder products (eg. cement, flour and lime), usually at 1.5-2.0 bar g and up to 2.5 bar g. Offering a robust design, high air flow capacity, oil free operation with low maintenance servicing, our Bulkline compressors are ideal for your dry bulk requirements.

### Technical Information

#### **Bulkline 650**

Maximum 630m<sup>3</sup>/hr (370 cfm)  
at 2.5 bar g (36 psi g)

#### **Bulkline 1000**

Maximum 1025m<sup>3</sup>/hr (603 cfm)  
at 2.5 bar g (36 psi g)

Flexible Drive Options | Long Discharge Cycles | Variable Flow Rates | Oil Free

# Applications

The Bulkline Compressor range is optimised for Dry Bulk applications. The variable flow capacity, drive options and long discharge cycles allow for ideal dry bulk transportation of the following products:



Animal Feed



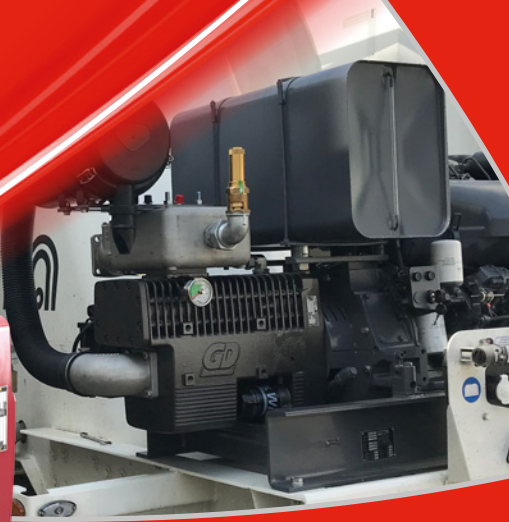
Construction Materials



Bulk Chemicals



Food & Beverage



## Design Features

### Drive Options

Unmatched drive flexibility. The Bulkline compressor range allows for installation utilising a wide variety of drive methods. Designed with drive flexibility at its core, the Bulkline screw compressor can be belt driven by PTO propshaft, or by any other method to suit your requirements.

### Package Options

With Bulkline, the compressor is just the beginning. We offer a huge variety of packages to best suit your business, including the Bulkline compressor with loose ancillaries, various belt drive packages featuring low noise enclosures and discharge air coolers, along with diesel or electric motor drive packages, as shown here.

### Long Discharge/Continuous Use

Designed to allow for longer than average continuous operation, the Bulkline compressor can be packaged with an oil cooler in order to extend this operating time further still. This unique feature makes the Bulkline your ideal choice for stationary plant installations.

### Variable Flow Rates

We offer the Bulkline compressor in two core designs, the 650 and 1000 models. When discharging product, the material itself plays a key role in deciding your air compressor. Each Bulkline configuration is designed to suit a wide range of applications from fine powders, such as cement and flour, to larger granules such as pelletised feed.

### Drive Options

<b>Prop. shaft drive:</b>	Direct from a vehicle PTO via an optional step-up gearbox.
<b>Belt Drive:</b>	Several belt and pulley kits available.
<b>Hydraulic Drive:</b>	Multiple drives available.
<b>Electric Motor Drive:</b>	Packages on base frames.
<b>Engine Drive:</b>	Packages on base frames.