



5 HP | OIL-LUBRICATED PISTON COMPRESSOR

GD70



The GD70 is an oil lubricated piston compressor for pressure off-loading of bulk liquids. This two-cylinder, single stage compressor is ideal for quickly off-loading your liquid bulk materials ranging from solvents to resins.

Features & Benefits

- Piston Air Compressor designed for use in the Liquid Bulk Tank market
- Lightweight and narrow construction that aids in installation where frame rail space is limited
- Built-to-last cast iron construction
- Reed valve design

Accessories

Standard accessories supplied with the GD70:

- Relief valve
- Check valve
- Lubricant
- Air filter

A drive flange is available as an optional accessory.



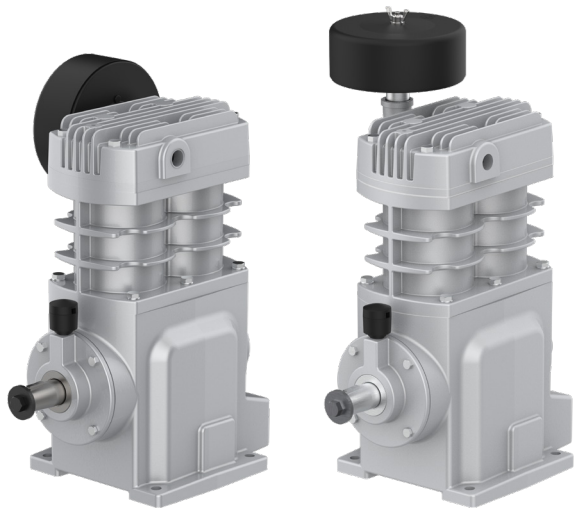
GD70

Stages	1
Cylinders	2
Power	5 HP
Max PSIG	40
Max RPM	1500
Max Flow	40 CFM
Max BHP	5.0
Inlet Connection	¾" Female NPT
Discharge Connection	½" Female NPT
Sump Capacity	1.27 qts.
*Weight	78 lbs.

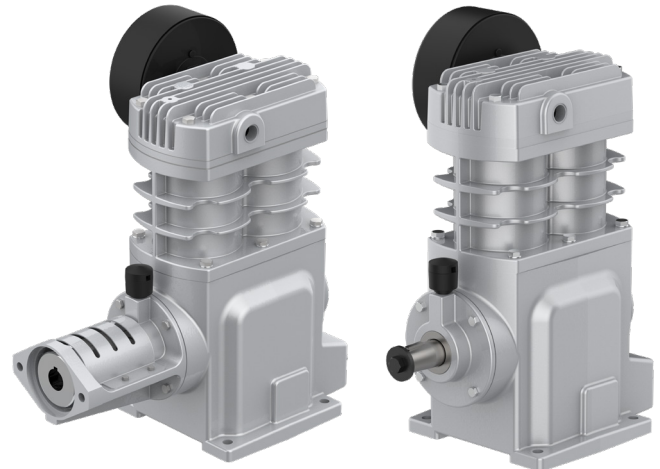
*Weight includes filter

Customize Your Process

Options & Accessories



- Straight or 90 degree filter options



- With or without Hydraulic Trunk
- 7/8" or 1" coupler option with trunk



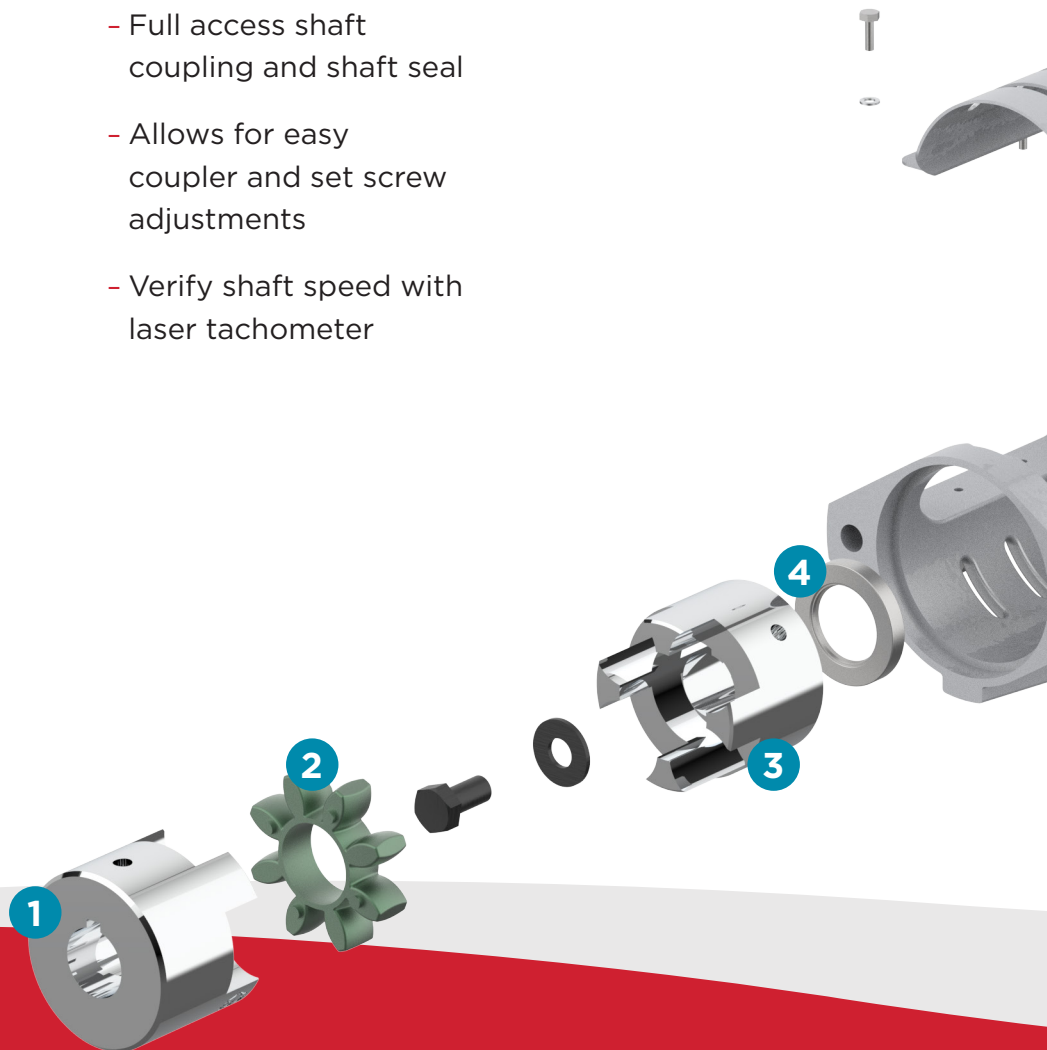
Accessories

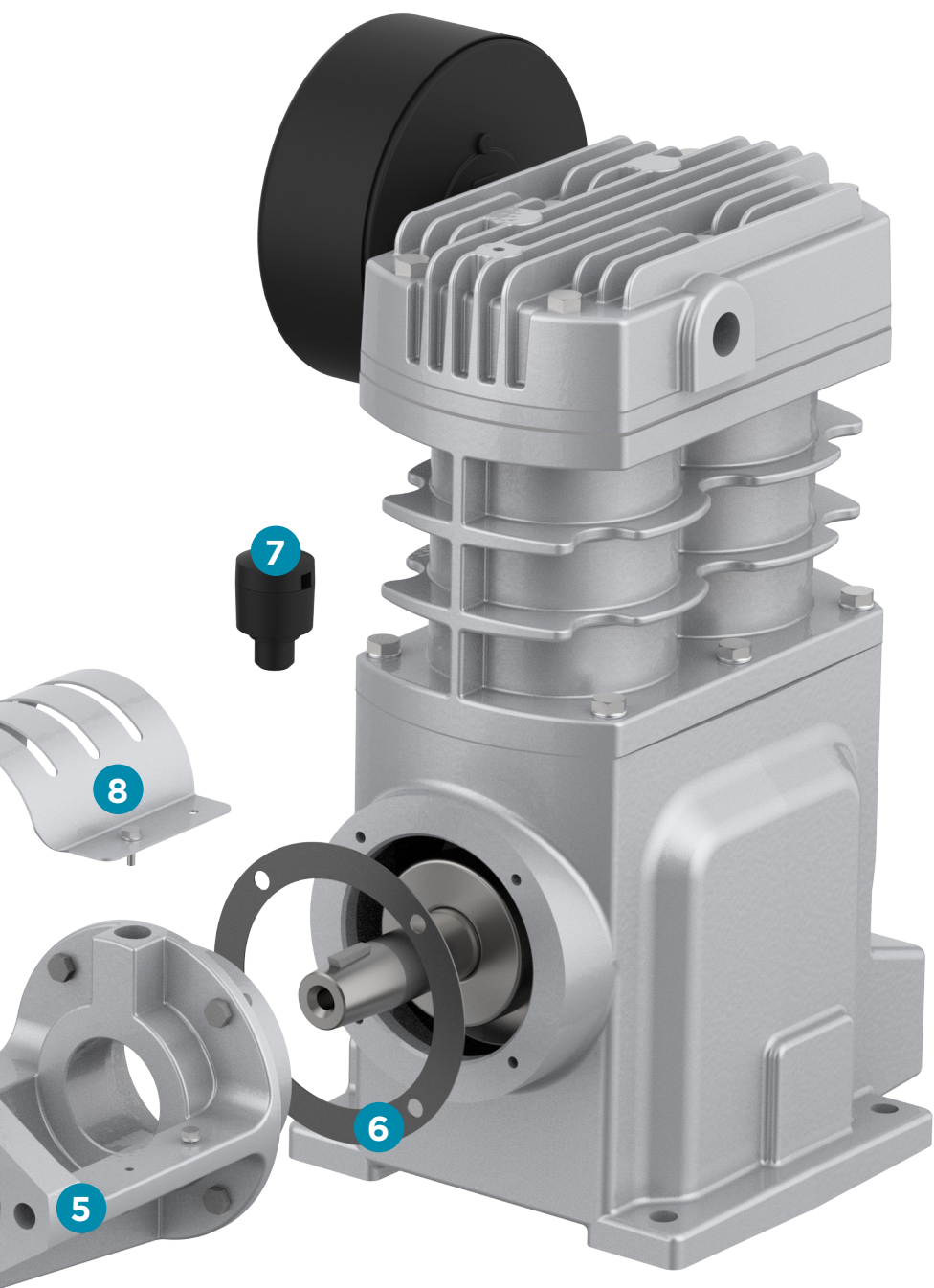
- Install Kit includes:
 - Relief valve
 - Check valve
 - Filter silencer
- AEON® AC-SY Plus Lubricant
- Optional Accessories
 - Drive flange (1100 Series or 1300 Series)

Hydraulic Trunk Features

The innovative GD70 hydraulic trunk design by Gardner Denver features a unique removable cover with openings for air circulation, simple access to the shaft coupling and seal as well as allowing for the use of speed reading instrumentation. The trunk is made of heavy duty cast iron construction, allows easy access to the coupling set screw and features a drain hole to prevent any water build up.

1. $\frac{7}{8}$ " Round with $\frac{1}{4}$ " Key or 1" Round with $\frac{1}{4}$ " Key Motor Shaft Coupler options
2. Spider Coupler
3. KTR Rotex 28 Coupler
4. Shaft Seal
5. One piece cast iron trunk & SAE "A" 2 bolt flange
6. End Cover Gasket
7. Vent Assembly
8. Removal Guard with Air Ventilation Openings
 - Full access shaft coupling and shaft seal
 - Allows for easy coupler and set screw adjustments
 - Verify shaft speed with laser tachometer

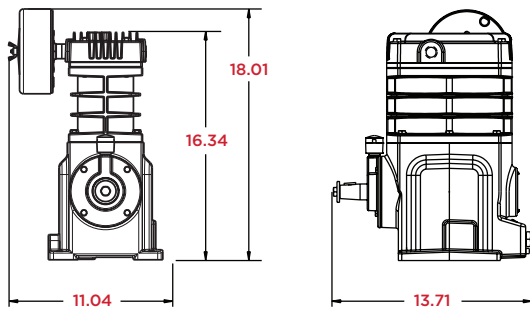




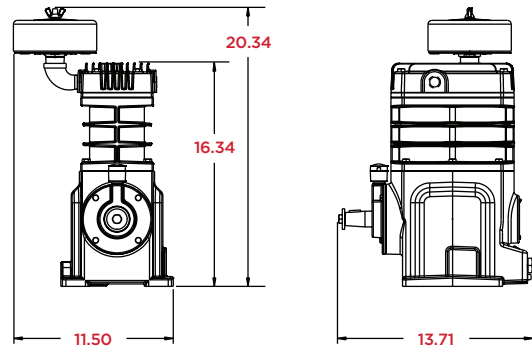
GD70 Dimensions

in **inches**

Bare Compressor

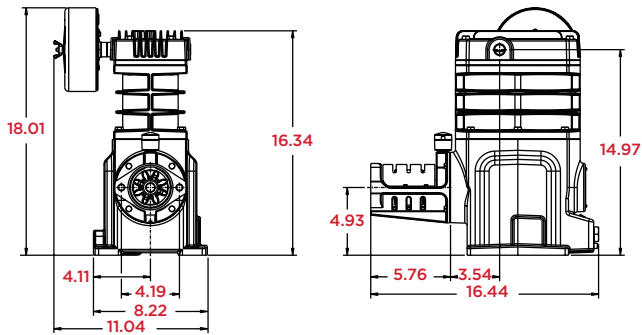


Straight Filter Option

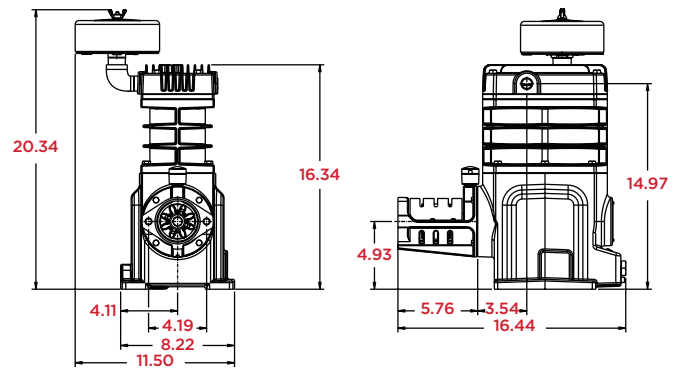


90 Degree Filter Option

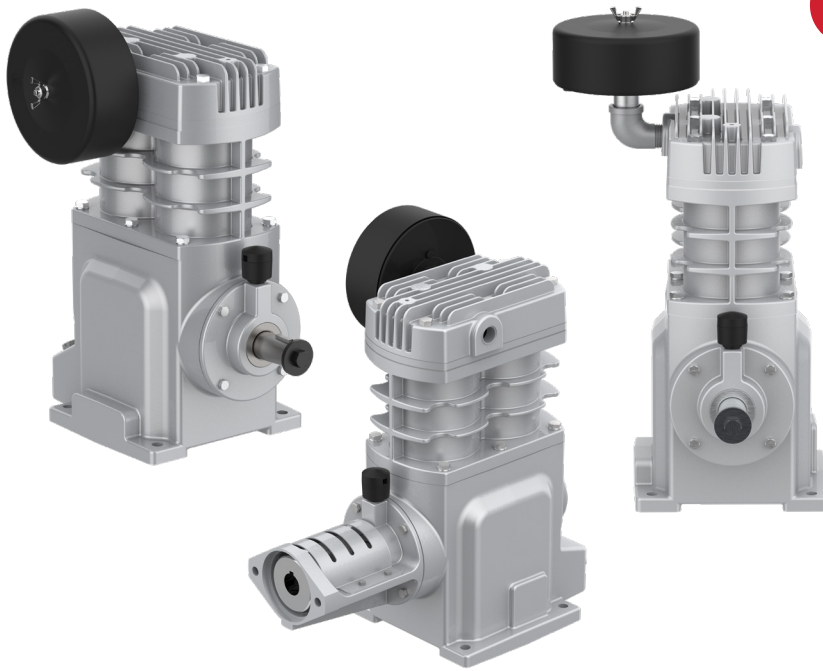
Compressor with Hydraulic Trunk



Straight Filter Option



90 Degree Filter Option



GD70 PERFORMANCE

SPEED RPM	25 PSI		30 PSI		36 PSI		40 PSI	
	CFM	HP	CFM	HP	CFM	HP	CFM	HP
500	11.9	1.4	11.7	1.5	11.5	1.6	11.3	1.6
800	18.6	2.6	18.3	2.6	18.0	2.7	17.8	2.8
1000	22.9	3.3	22.6	3.4	22.2	3.5	22.0	3.6
1200	27.4	4.1	27.0	4.2	26.6	4.3	26.3	4.4
1350	30.6	4.6	30.3	4.7	29.8	4.9	29.5	5.0
1500	34.8	5.2	33.5	5.3	33.3	5.5	32.7	5.6

The leader in every market we serve
by continuously improving all business processes
with a focus on innovation and velocity

**Gardner
Denver®**

www.GardnerDenver.com

©2025 Industrial Technologies and Services, LLC
Printed in U.S.A.
GDT-GD70 4th Ed. 4/25

